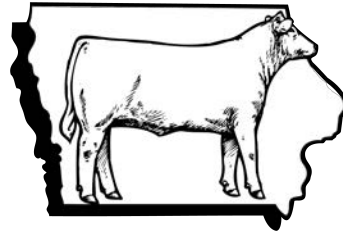


COALITION TO SUPPORT IOWA'S FARMERS

MEMBER ORGANIZATIONS



Iowa Cattlemen's



Association





WHO WE ARE



Rules for Fish Farms



- ▶ **Size matters:**
- ▶ Capacity determines which rules apply. Capacity is the maximum number of animals that will be confined at any one time.
- ▶ 500 Animal Units or Less - Small Animal Feeding Operations (SAFO)
- ▶ 500 to 1,000 Animal Units – (AFO)

New
Confinements,
Size matters!

What is an Animal Unit?

Animal Unit Conversion Factors

Species	Animal Unit
Slaughter and feeder cattle	1.0
Immature dairy cattle	1.0
Mature dairy cattle	1.4
Swine over 55 pounds	0.4
Swine between 15 and 55 pounds	0.1
Sheep or lambs	0.1
Turkeys over 112 ounces	0.018
Turkeys less than 112 ounces	0.0085
Chickens over 48 ounces	0.01
Chickens less than 48 ounces	0.0025
Fish	0.001

What rules apply to all sized confinement barns?

- ▶ Setbacks to water
- ▶ Check for Alluvial and Karst soils
- ▶ Stormwater discharge permit
- ▶ All confinement animals counted together (Combination Farms)



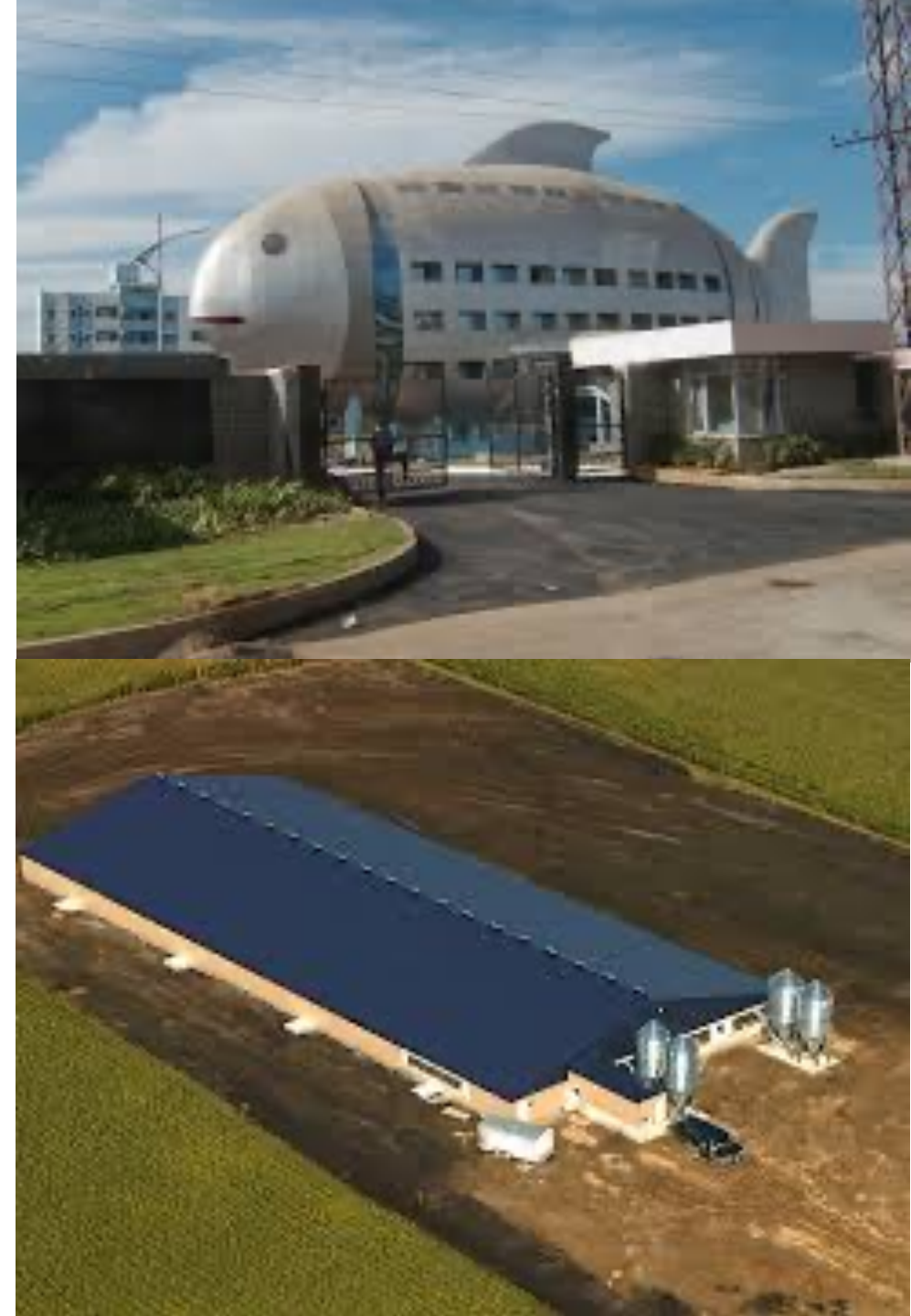


500 to 1,000 Animal Units (500,000 fish)

- ▶ Separation distances to residences, businesses, churches, schools, public use areas, and public roads must be met.
- ▶ Manure Management Plan or Nutrient Management Plan
- ▶ Certified Manure Applicator
- ▶ Construction Design Statement and Standards

Confinement Animals Counted Together (Combination Farms)

- ▶ Under state law, for the purpose of new construction permitting, all animal units in the same production practice need to be counted together.
- ▶ What this means is if you have a 1,200 head confinement hog barn and you are considering building a 250,000 head fish barn, you need to count the animal units from both confinements together to know what separation distances and permitting requirements would need to be met for the proposed fish farm. (730 total Animal Units)



Siting Considerations

Permitting

◦Environmental

- Construction Permit (120 days out)
- Master Matrix
- MMP

◦Production

- Importation Permit - needed for exotic species (Alan Johnson at Iowa DNR)
- Aquaculture Unit License
needed to buy, sell or trade fish in Iowa (Alan Johnson at Iowa DNR)

Siting Considerations

- ▶ Getting rid of waste water
- ▶ Nutrient analysis
- ▶ Acres needed
- ▶ Method of application
 - ▶ Hauling
 - ▶ Irrigation
 - ▶ NPDES Permit
 - ▶ Discharge to a POTW (Publicly-owned treatment works)



Fish and shrimp production in town

You are not an AFO - “the rules go away”

Use less than 25,000 gallons of water/day- not classified as industrial

Biochemical Oxygen Demand is the limiting factor. (BOD is a measure of organic matter that removes oxygen from the water).

Stay under the limit or get a Treatment Agreement from the city

Discharge rate from your facility is less than 5% of treatment plants flow load per day

Before building, get yourself educated!



- ▶ You will have a lot of interest in your project!
- ▶ It costs too much to do it wrong!
- ▶ Contact the Coalition to help you with the rules.
- ▶ Have a plan for today and tomorrow!

Corn Time[©] by Lang



CONNECT WITH US

► WWW.SUPPORTFARMERS.COM

- Farmer testimonials
- Upcoming events
- New information
- Green Farmstead Partner program
- Good Farm Neighbor Award
- Updates impacting farmers today

► IOWA LIVESTOCK INSIDER

Visit our website to sign up!



COALITION TO SUPPORT IOWA'S FARMERS

Brian Waddingham, Executive Director | bwaddingham@supportfarmers.com

Kody Havens, Field Specialist | khavens@supportfarmers.com